

SECTION 1B: HUMAN BIOLOGY - THE
SKELETAL/MUSCULAR
SYSTEM, THE SENSES AND HUMAN REPRODUCTION

Our basic body shape is formed by our skeleton, which is made up of over two hundred bones. The skeleton provides support and protection for the body and the arrangement of the bones, together with the associated ligaments and muscles, allows for movement.

On completion of this section, students should be able to

OB24 identify the main parts of the human skeleton and understand that the functions are support, movement and protection

OB25 locate the major bones in the human body including the skull, ribs, vertebrae, collarbone, shoulder blade, humerus, radius, ulna, pelvis, femur, tibia and fibula, using a

(b) The diagram shows part of the human skeleton.

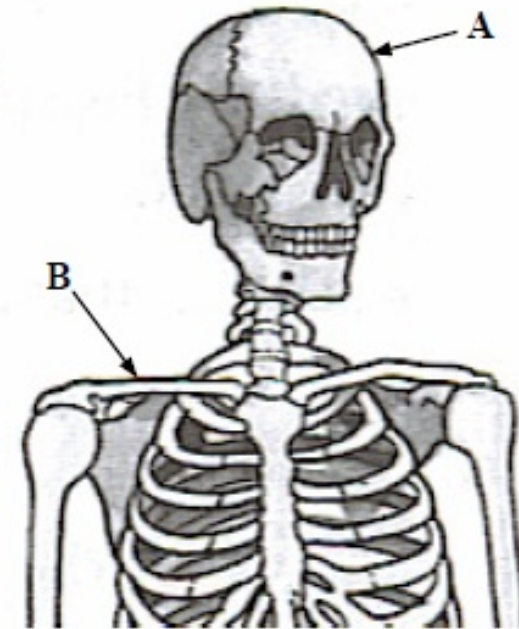
Answer the following questions
on the human skeleton.

(12)

Name the bones of the skeleton
labelled A and B in the diagram.

Name of bone A _____

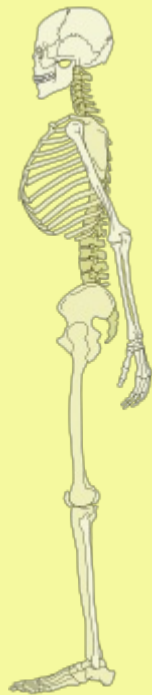
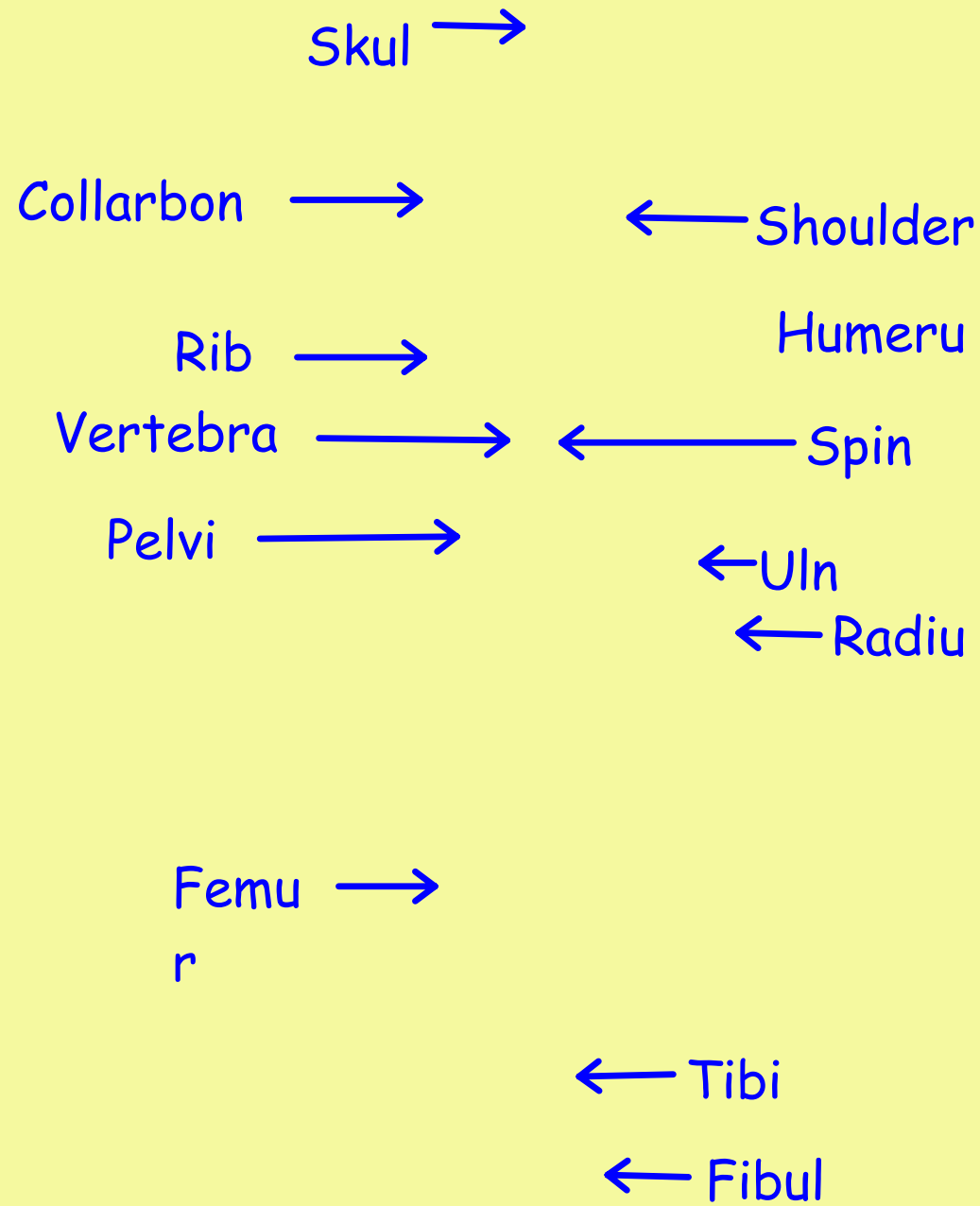
Name of bone B _____

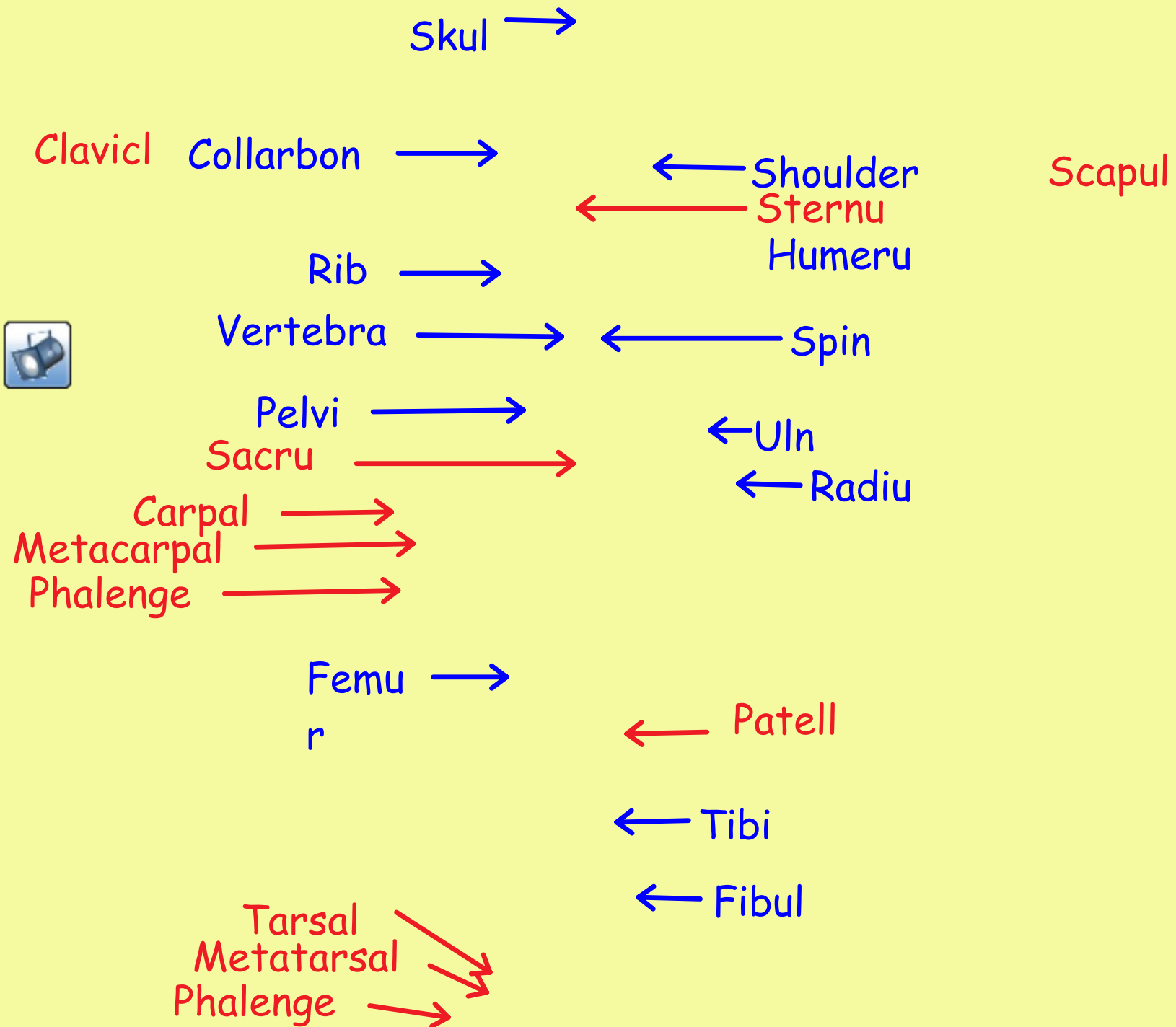


Give any two functions of the human skeleton.

1 _____

2 _____





Collarbon

Rib

Femu

Pelvi

Humeru

Uln

Vertebra

Spin

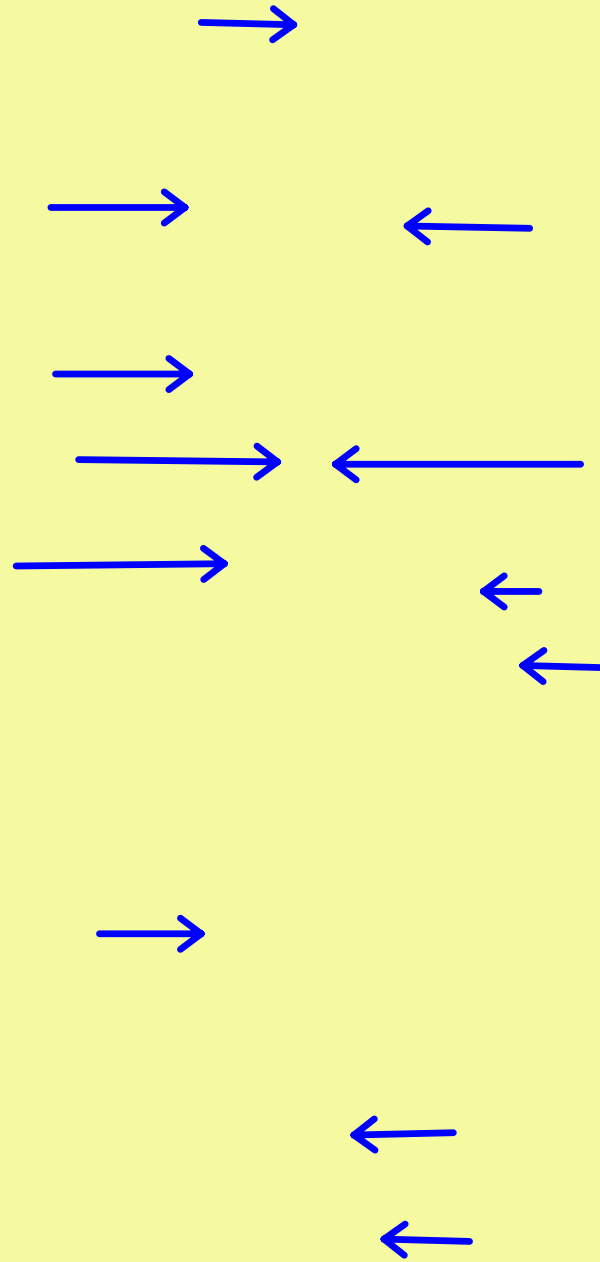
Shoulder

Radiu

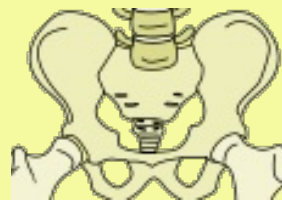
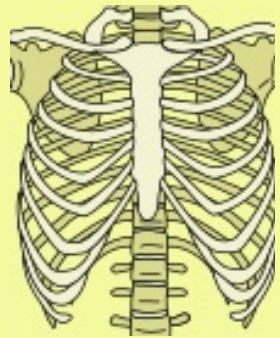
Fibul

Skul

Tibi







Collarbone

e

27

Provides protection for our

This is not a funny

Humerus

20

Biggest bone in the (human)

Number of bones in an

Skull

Number of bones in a newborn

Femur

The only horizontal 'long

(c) David Kearney, 2011

This interactive whiteboard file may be freely used in a not-for-profit classroom, provided the source is acknowledged.

This and other CBI files are available on

www.cbiproject.net

In order to support your fellow teachers, please send your own CBI files for sharing to davidk@ict4schools.ie

Ní neart go cur le chéile



http://commons.wikimedia.org/wiki/File:Skeleton_warrior.jp